

800 Surface Mount Series

1x2, 2x2 & 2x4 Surface Module

Features

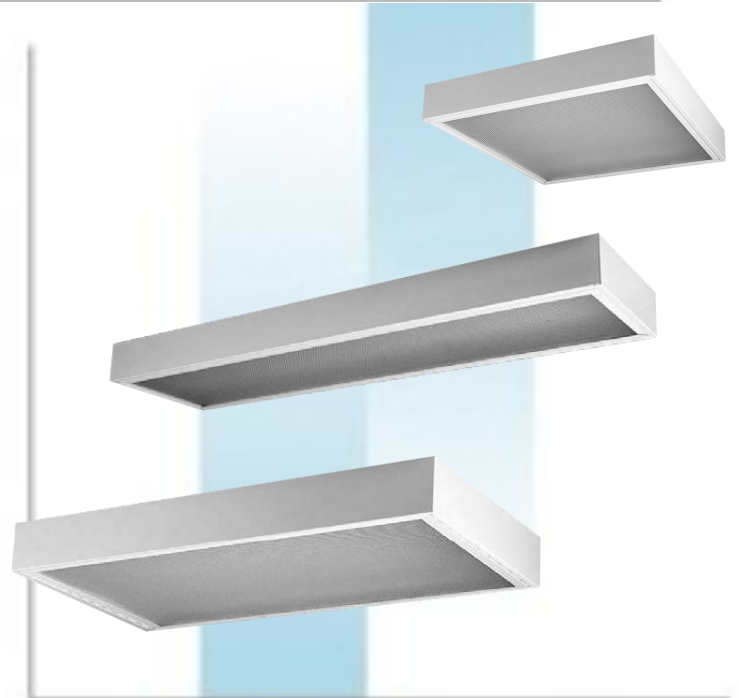
- White finish surface mount
- UL listed,
- 0-10v Dimming option
- Available in 1x4, 2x2 & 2x4

Specifications

- Ballasts are thermally protected class P, non-PCB & UL listed. Electronic ballasts are sound rated A. Multi volt 0° F ballast T8 & T5, -20° F T5HO.
- Housings are formed from cold rolled steel and painted with a high-gloss, baked white enamel finish after multi-stage cleaning and a phosphate coating to inhibit rust, has been applied.
- Fixture is designed for ceiling mount.
- Door has mitered corners and hinges from either side.
- Standard diffuser is 100% virgin acrylic.

Application

- Commercial/Residential
- Classrooms
- Offices
- Retail Stores
- Libraries



Accessories/Options

- Emergency battery pack (with ballast)
- Dual Ballasts
- 0-10v dimming

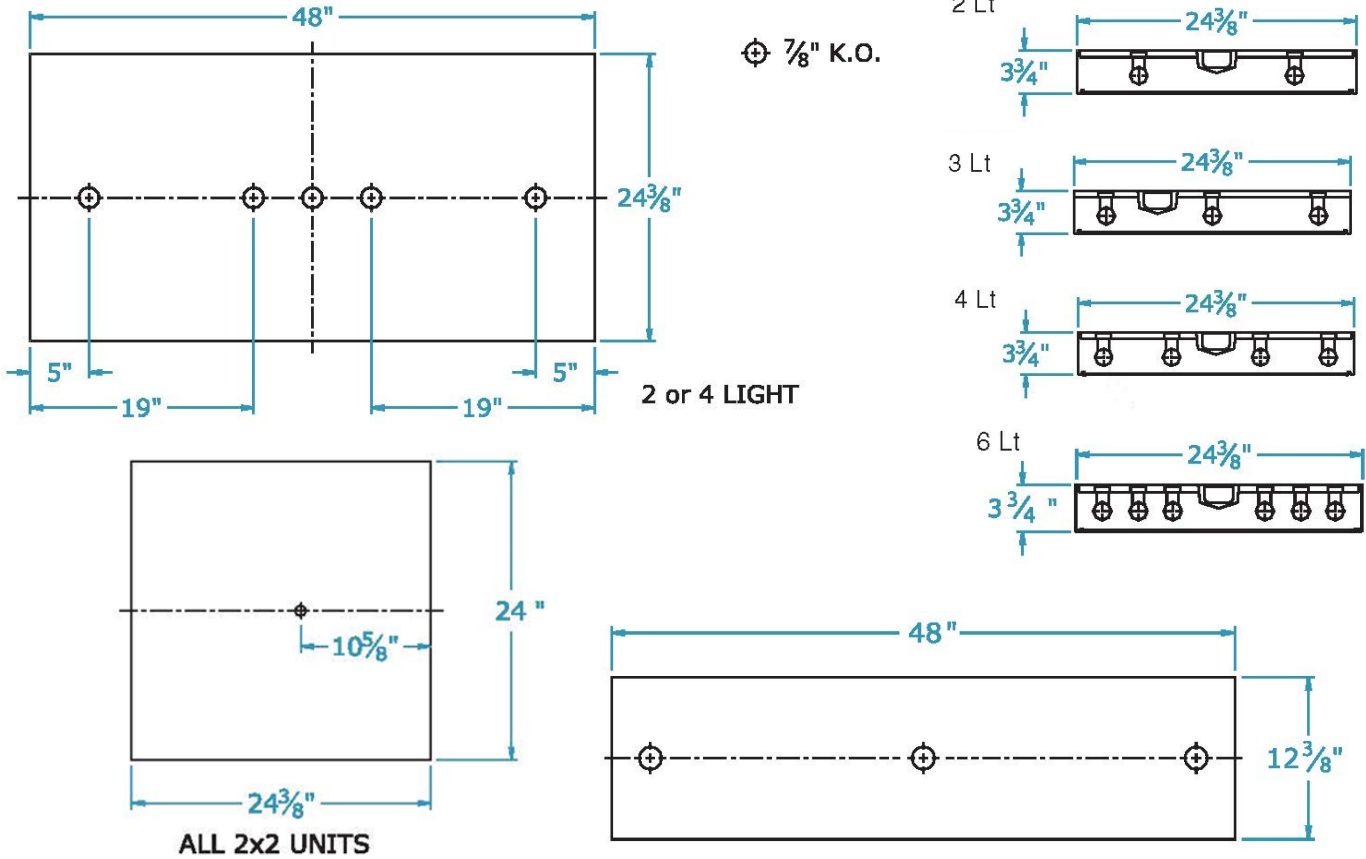
Catalog Number	Type

800 Surface Mount Series

Dimensions are subject to change.
Consult factory for verification.
All configurations may not be shown.

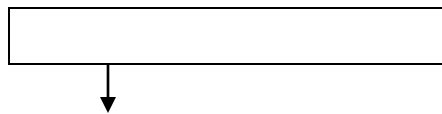
Dimensions

Back View



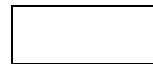
Ordering Information

Example: 822-SA1-317 XV



814-SA1-232	2 lamp 1x4
822-SA1-217	2 lamp 2x2
822-SA1-317	3 lamp 2x2
822-SA1-417	4 lamp 2x2
824-SA1-232	2 lamp 2x4
824-SA1-332	3 lamp 2x4
824-SA1-432	4 lamp 2x4
824-SA1-632	6 lamp 2x4

—



Ballast

- XV Normal ballast factor
- XVL Low Ballast factor
- XVH High ballast factor
- PZ1 0-10v Dimming



Options

- EM Battery pack (with ballast)
- D/L Dual Ballasts

