

LED Delta Wall Mount

LED Wall Mount Fixture

Features

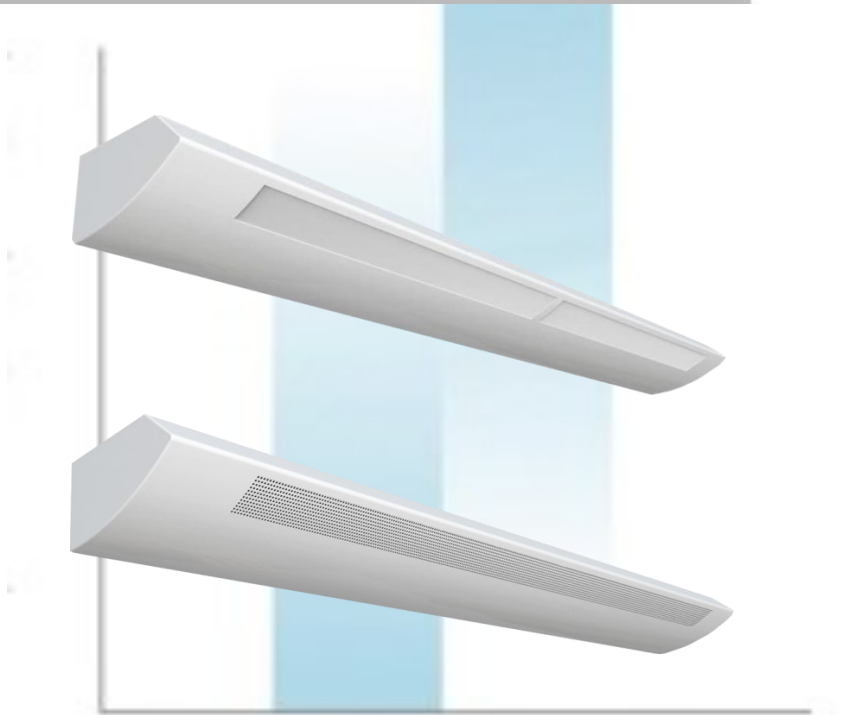
- Wall mount indirect luminaire
- UL listed, Installed driver and module kits are DLC approved
- 3500k, 4000k & 5000k
- Available in 4' or 8'
- 0-10v Dimmable
- Slotted or perforated

Specifications

- 120-277v HPF / 50,000 hrs / 100+ lumens per watt / CRI >80.
- Driver max case temperature 194° F / 90° C / THD: <20%. Board max temperature 185° F / 85° C .
- Housings are formed from cold rolled steel and painted with a high-gloss, baked white enamel finish after multi-stage cleaning and a phosphate coating to inhibit rust, has been applied.
- Fixture is designed for wall mount.
- Standard diffuser is 100% virgin acrylic white opaque.
- Slotted Bottom 65/35 Up light/Down light
- Perforated Bottom 85/15 Up light/Down light

Application

- Commercial/Residential
- Corridors
- Offices
- Hospitals
- Conference rooms
- Hotel and motel facilities



Accessories/Options

- Emergency battery pack

| Catalog Number | Type |
|----------------|------|
| | |

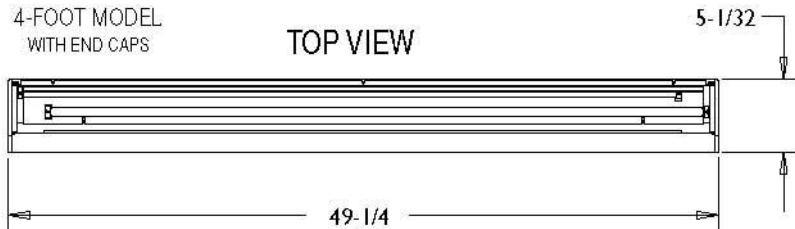
LED Delta Wall Mount

Dimensions and specifications are subject to change. Consult factory for verification.

Dimensions

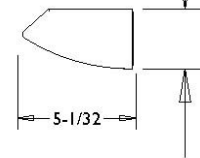
4-FOOT MODEL
WITH END CAPS

TOP VIEW



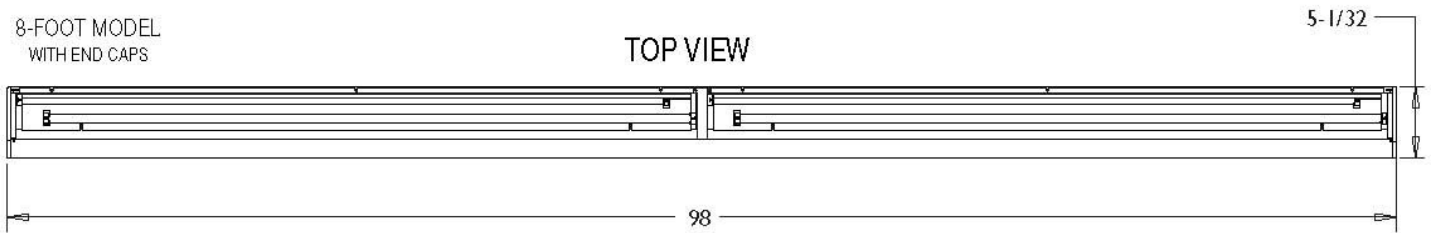
2-11/16

END VIEW



8-FOOT MODEL
WITH END CAPS

TOP VIEW



Ordering Information

Example: LEDK-DWO-44W-4K

